

# Columbus Portfolio Range

## Fund Fact Sheet

### CRF Balanced Plus

August 2020

**Launch date**  
December 2012

**Fund size**  
R 166.4 million

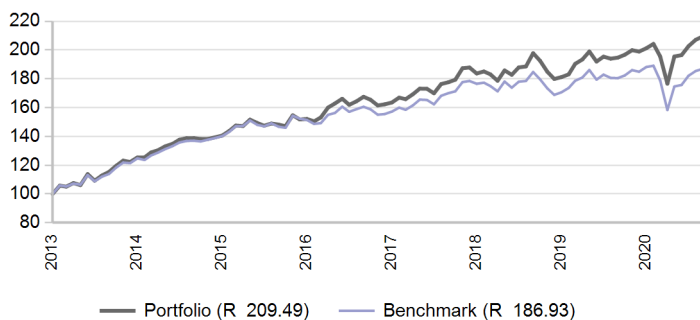
#### Fund description

Combined - Multi asset class - Specialist

#### Portfolio description

This portfolio is managed within what Alexander Forbes Investments regards to be aggressive investment parameters. Within each asset class, the investment managers are given specific mandates aimed at growth in capital value. In constructing the local component of this portfolio, Alexander Forbes Investments allocates the assets primarily to equities. The global component has a similar investment profile, with allocation to global equities, bonds, cash and alternative investments.

#### Value of R 100 invested since inception



#### Manager weightings

Manager	Weight
Performer	86.4%
Performer Local Equity BB	8.8%
Global ACWI Index	4.8%
AF Investments Global DM Index Equity AM	0.0%
AF Investments Global EM Index Equity AM	0.0%
<b>Total</b>	<b>100.0%</b>

#### Risk stats over 3 Years

	Portfolio	Benchmark
Annualised standard deviation	11.5%	11.8%
Sharpe ratio	-0.1	-0.3
Maximum drawdown	13.5%	16.3%
Positive months	66.7%	63.9%

#### Benchmark allocation

Local asset class	Benchmark	Allocation
Equity	FTSE/JSE Capped Shareholder Weighted All Share Index	15.0%
Combined asset class	Benchmark	Allocation
Balanced	AF Investable Global LMW Median	85.0%
<b>Total</b>		<b>100.0%</b>

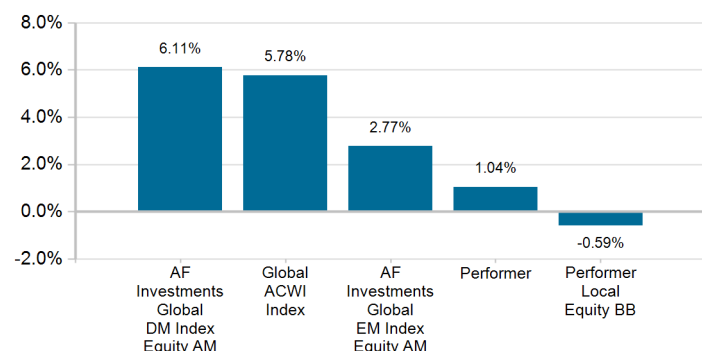
#### Market summary

	1 Month	3 Months	1 Year	3 Years
FTSE/JSE All Share	-0.26%	10.21%	3.85%	2.64%
FTSE/JSE SWIX	-1.03%	9.50%	-0.20%	-0.42%
FTSE/JSE Capped SWIX ALSI	-0.88%	9.23%	-3.36%	-2.66%
FTSE/JSE SA Property	-8.59%	0.36%	-44.25%	-22.73%
All Bond Index	0.89%	0.30%	4.16%	7.74%
STeFI Composite index	0.39%	1.25%	6.44%	7.02%
MSCI AC World	5.54%	11.08%	29.93%	19.02%
FTSE WGBI	-1.00%	0.02%	17.75%	13.60%

#### Portfolio returns

	Portfolio	Benchmark
1 Month	1.14%	0.80%
3 Months	6.63%	6.38%
YTD	4.10%	-0.67%
1 Year	7.57%	3.57%
3 Years	5.66%	3.21%
5 Years	7.17%	4.96%
Since Inception	10.01%	8.41%

#### Underlying returns (1 month to August 2020)



**Effective asset allocation exposure**

<b>Local</b>	<b>66.3%</b>
<b>Equity Excluding Property</b>	<b>39.7%</b>
Basic Materials	10.1%
Consumer Services	9.9%
Financials	8.2%
Consumer Goods	5.1%
Industrials	1.7%
Technology	1.5%
Healthcare	1.4%
Telecommunications	1.3%
Other Securities	0.6%
<b>Property</b>	<b>1.6%</b>
<b>Bonds</b>	<b>14.0%</b>
< 12 Months	0.5%
1 - 3 Years	0.6%
3 - 7 Years	1.5%
7 - 12 Years	5.9%
12+ Years	5.5%
<b>Cash</b>	<b>3.9%</b>
<b>Commodities</b>	<b>1.6%</b>
<b>Alternatives</b>	<b>5.5%</b>
<b>Global</b>	<b>32.6%</b>
<b>Equity Excluding Property</b>	<b>26.2%</b>
<b>Property</b>	<b>0.7%</b>
<b>Bonds</b>	<b>1.0%</b>
<b>Cash</b>	<b>4.6%</b>
<b>Balanced</b>	<b>0.0%</b>
<b>Africa</b>	<b>1.1%</b>
<b>Equity Excluding Property</b>	<b>0.8%</b>
<b>Property</b>	<b>0.0%</b>
<b>Bonds</b>	<b>0.0%</b>
<b>Cash</b>	<b>0.0%</b>
<b>Alternatives</b>	<b>0.2%</b>

**Top 10 equity holdings**

<b>Holding</b>	<b>%</b>
NASPERS	5.6%
BRITISH AMERICAN TOBACCO PLC	2.5%
STANDARD BANK GROUP	1.9%
BHP GROUP PLC	1.7%
FIRSTRAND LIMITED	1.7%
ANGLO AMERICAN	1.5%
PROSUS	1.4%
IMPALA PLATINUM HLDS	1.2%
MTN GROUP	1.1%
BIDCORP LTD	0.9%
<b>% of total portfolio</b>	<b>19.6%</b>

**Top 10 fixed interest issuers**

<b>Issuer</b>	<b>%</b>
SOUTH AFRICA (REPUBLIC OF)	10.6%
ESKOM HOLDINGS SOC LTD	0.6%
FIRSTRAND BANK LIMITED	0.5%
STANDARD BANK GROUP LTD	0.4%
YIELDX	0.3%
NEDBANK GROUP LTD	0.2%
ABSA GROUP LIMITED	0.2%
INVESTEC BANK LIMITED	0.2%
COMMUNITY GROWTH MANAGEMENT COMPANY LTD	0.1%
SOUTH AFRICAN NATIONAL ROADS AGENCY LIMITED	0.1%
<b>% of total portfolio</b>	<b>13.2%</b>

**Total expense ratio and Transaction cost breakdown****Period (Annualised, rolling one-year period): 01 Jul 2019 to 30 Jun 2020**

Average annual service charge (incl VAT)	0.46%
Underlying manager performance fees expense	0.04%
Underlying global manager expense	0.08%
Underlying fund expense	0.19%
Other expenses	0.01%
<b>Total Expense Ratio (TER)</b>	<b>0.77%</b>
<b>Transaction Costs (TC)</b>	<b>0.06%</b>
<b>Total Investment Charges (TER + TC)</b>	<b>0.83%</b>

**FAIS notice and disclaimer**

Alexander Forbes Investments Limited is a licensed financial services provider in terms of Section 8 of the Financial Advisory and Intermediary Services Act, 37 of 2002, as amended, FAIS licence number 711. This information is not advice as defined and contemplated in the Financial Advisory and Intermediary Services Act, 37 of 2002, as amended. Past investment returns are not indicative of future returns. This product is not guaranteed. Please be advised that there may be representatives acting under supervision. Company Registration Number: 1997/000595/06. Pension Fund Administrator No.24/217. Long Term Insurance Act No. 00018/001. Postal address: P.O. Box 786055, Sandton 2146. Physical Address: 115 West Street, Sandown, 2196. Telephone number: +27 (11) 505 6000. The complaints policy and conflict of interest management policy can be found on the Alexander Forbes Investments website: <http://www.alexanderforbesinvestments.co.za>.

**Notes**

- Market data is sourced from Datastream. The FTSE/JSE Africa Index Series is calculated by FTSE International Limited ("FTSE") in conjunction with the JSE Securities Exchange South Africa ("JSE") in accordance with standard criteria. The FTSE/JSE Africa Index Series is the proprietary information of FTSE and the JSE. All copyright subsisting in the FTSE/JSE Africa Index Series index values and constituent lists vests in FTSE and the JSE jointly. All their rights are reserved.
- All returns are before deduction of Alexander Forbes Investments' policy fees and performance fees, but net of other expenses. Returns for periods exceeding one year are annualized and all returns are quoted in Rands. Past investment returns are not indicative of future returns.
- All holdings information is based on latest available data.
- There may be differences in totals due to rounding.
- Kindly note that with effect from 1 April 2017, all Alexander Forbes Investments South African equity benchmarks have changed from the FTSE/JSE SWIX to the FTSE/JSE Capped SWIX ALSI Index.